



**Setting Up Prinergy Refiner
PostScript Printer Description (PPD) Driver
For Windows 2000, XP and Vista**



Setting Up Prinergy Refiner PostScript Printer Description (PPD) For Windows 2000, XP and Vista

This is a guide on how to properly install a Printer Post Script Driver for Prinergy Refiner.

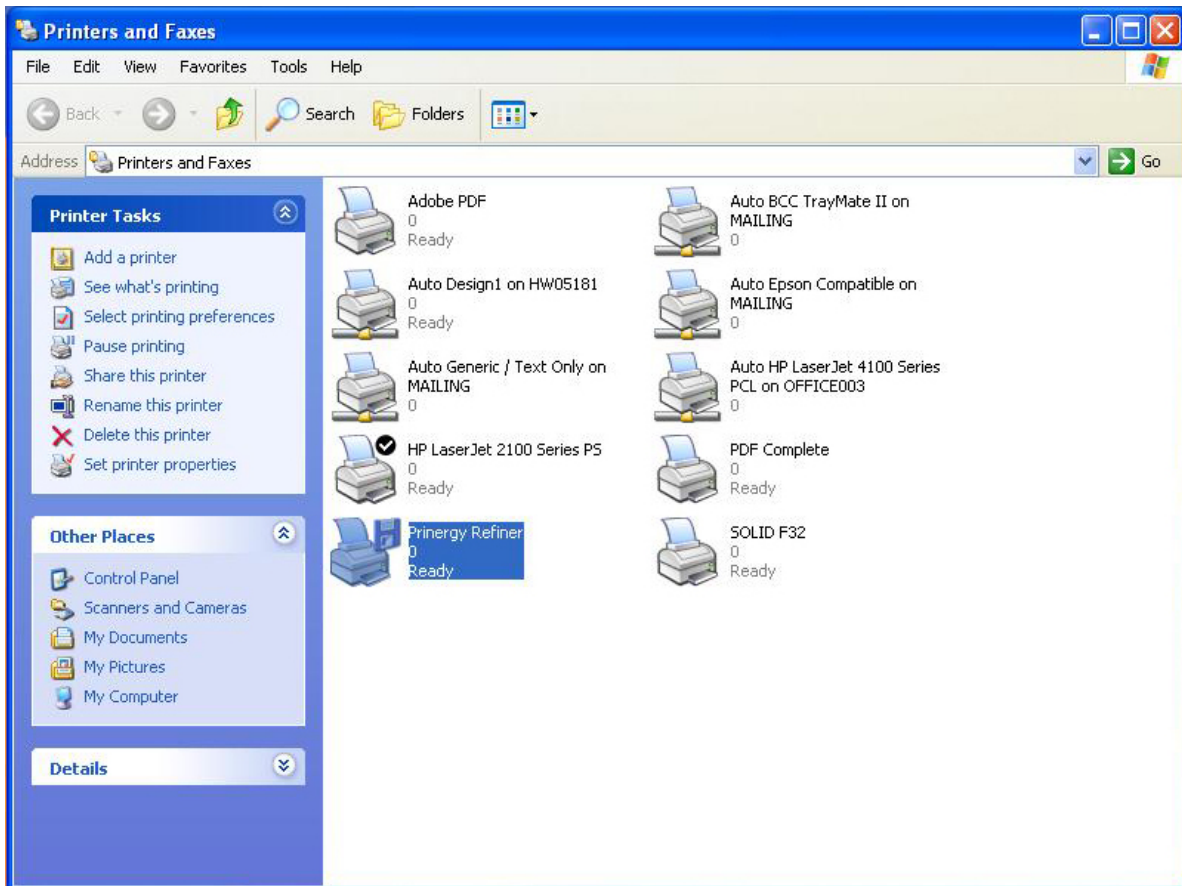
Click the following link to download the file needed for this setup.

www.laytonprinting.com/pubdownloads.html and click **PostScript Printer Driver PC Only**.

After downloading the file, unzip the contents and proceed to the Install instructions.

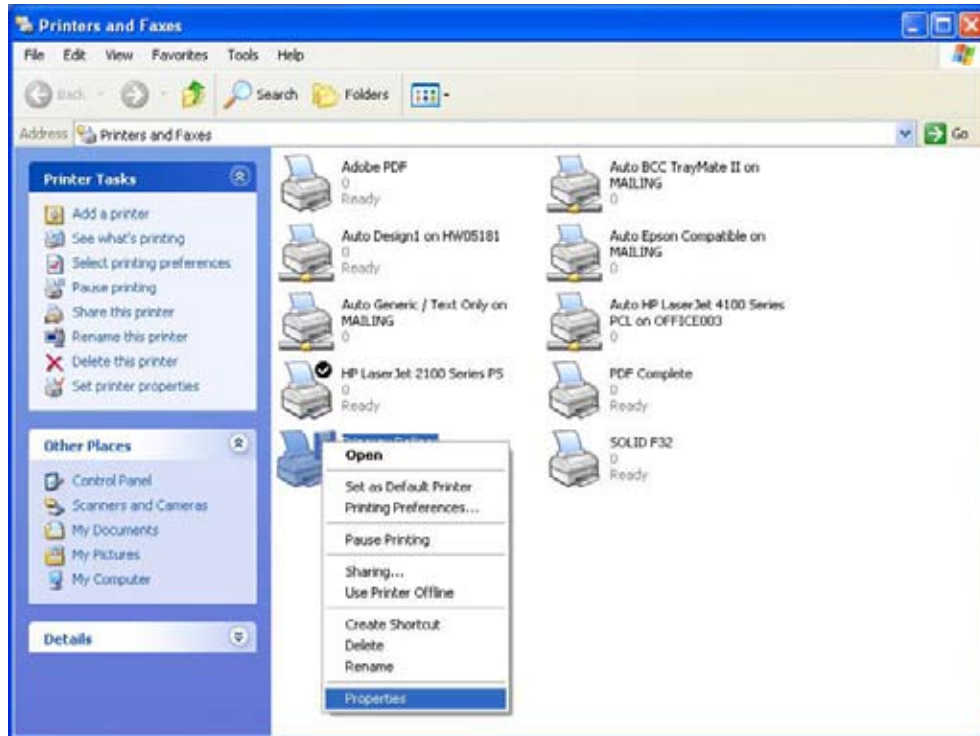
A. Install

1. Double Click file **"winsteng"** in **PRIN_PC** folder
2. A window will pop up. Click **"RUN"**
3. Welcome Window will pop up. Click **"Next"**
4. License Agreement will show. Click **"ACCEPT"**
5. Select **"Local Printer"** then click **"Next"**
6. Port window will pop up. Select **"FILE:"** then click **"Next"**
7. Select Printer Model Window. Click **"Browse"** and search for the **PRIN_PC** folder in Folder window and select **"Prinergy Refiner"**. Click **"OK"** then click **"Next"** (make sure Prinergy Refiner is selected).
8. Sharing Window. Select **"Not Shared"** then click **"Next"**
9. Printer Info Window. Printer Name: **"Prinergy Refiner"**. Select **NO** on **"Do you want to use this printer as your default printer?"** and **NO** on **"Would you like to print the test page?"**
10. Click **"Install"**
11. "Do you want to configure your printer now?" – Click **NO**
12. When prompted to restart your computer, select **YES**

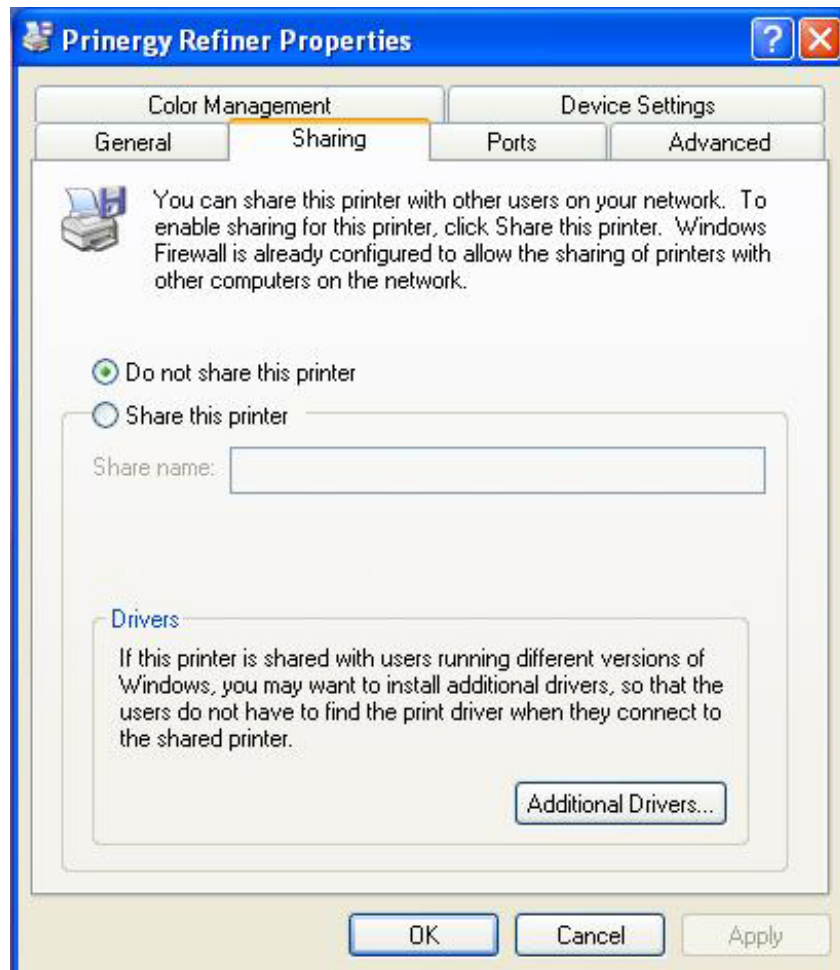


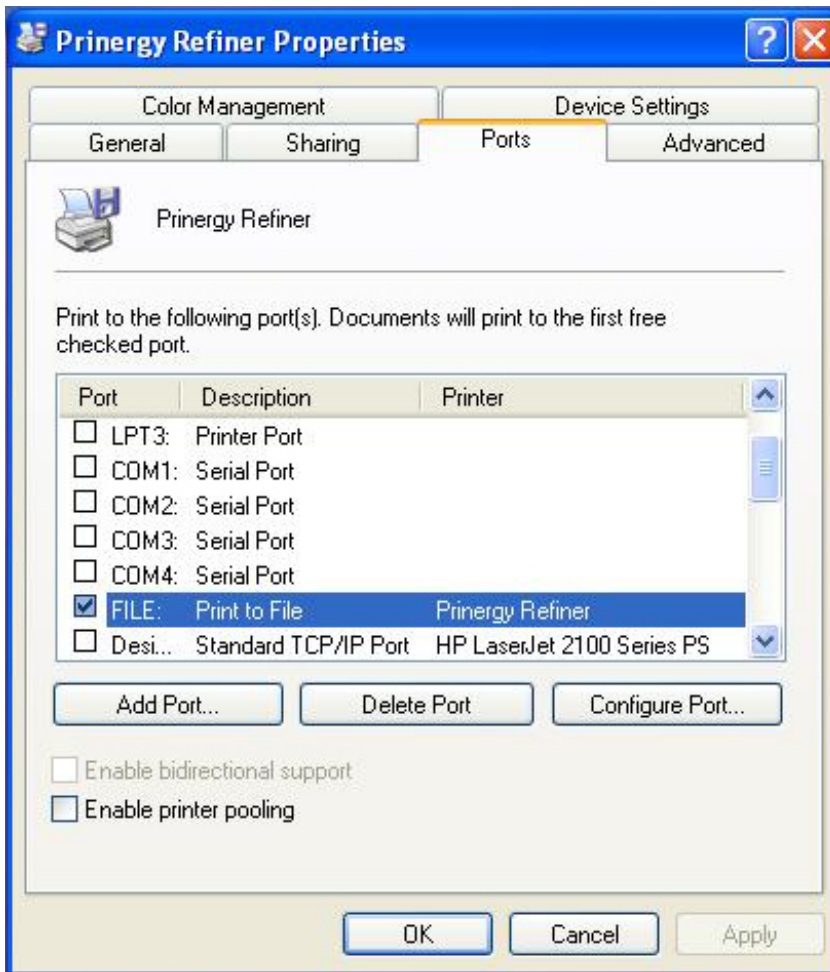
B. Prinergy Refiner Setup

1. Click **Start** menu navigate to **Printers and Faxes**.
2. Select **Prinergy Refiner** from the list. **Right Click** and Select **Properties**

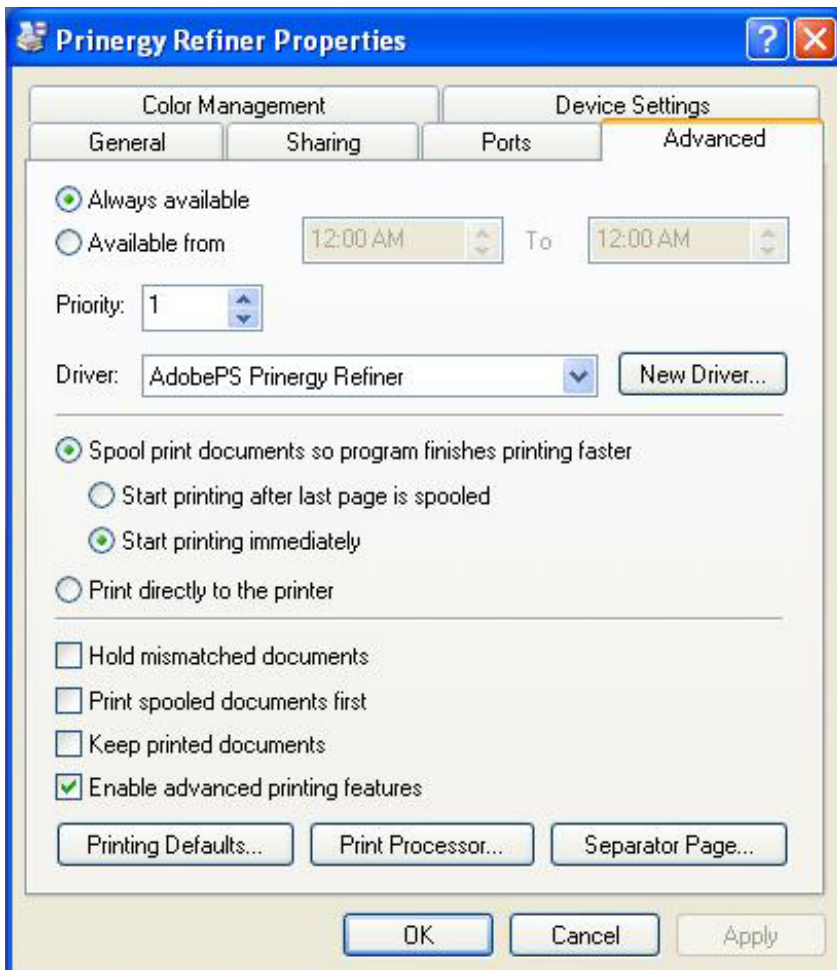


3. Click the **Sharing** Tab. Check **"Do not share this printer."**



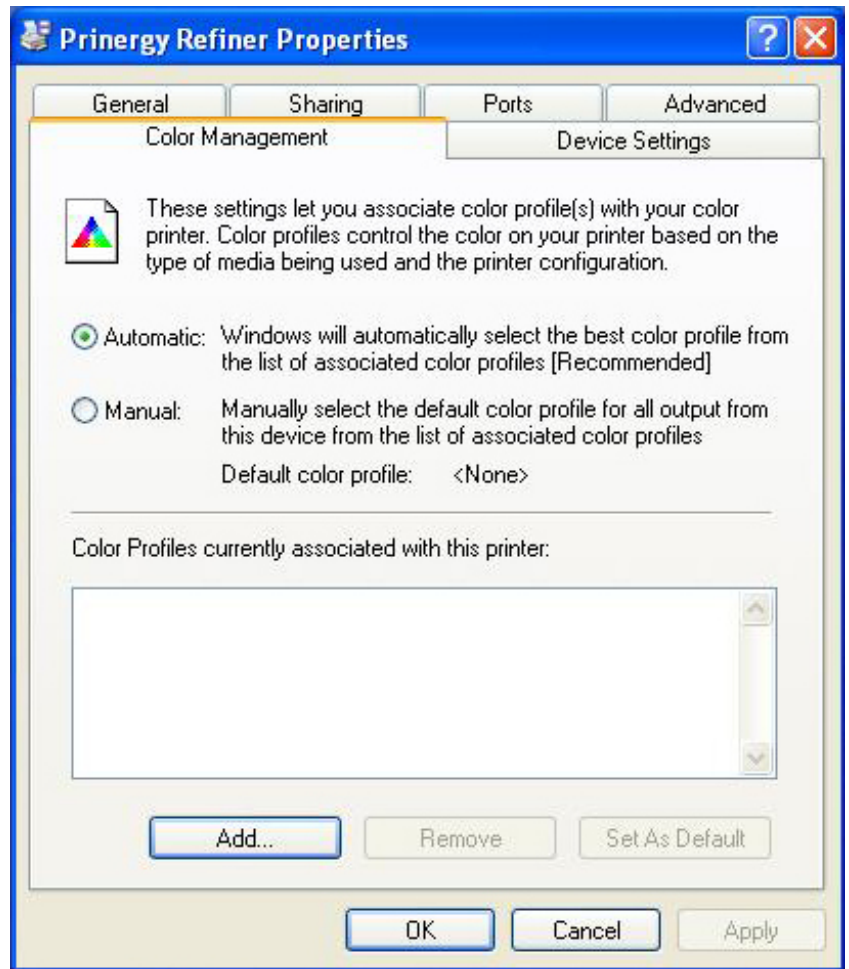


4. Click **Ports** Tab and verify that under the Port "FILE:" **Prinerger Refiner** should be in the printer column.

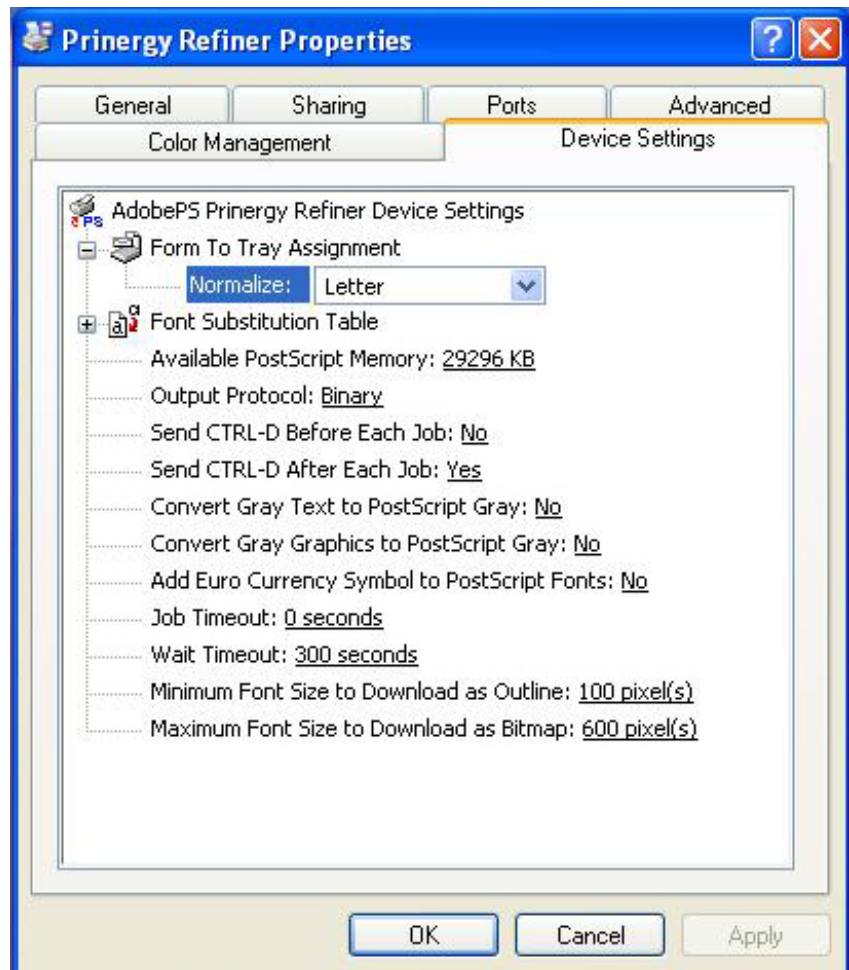


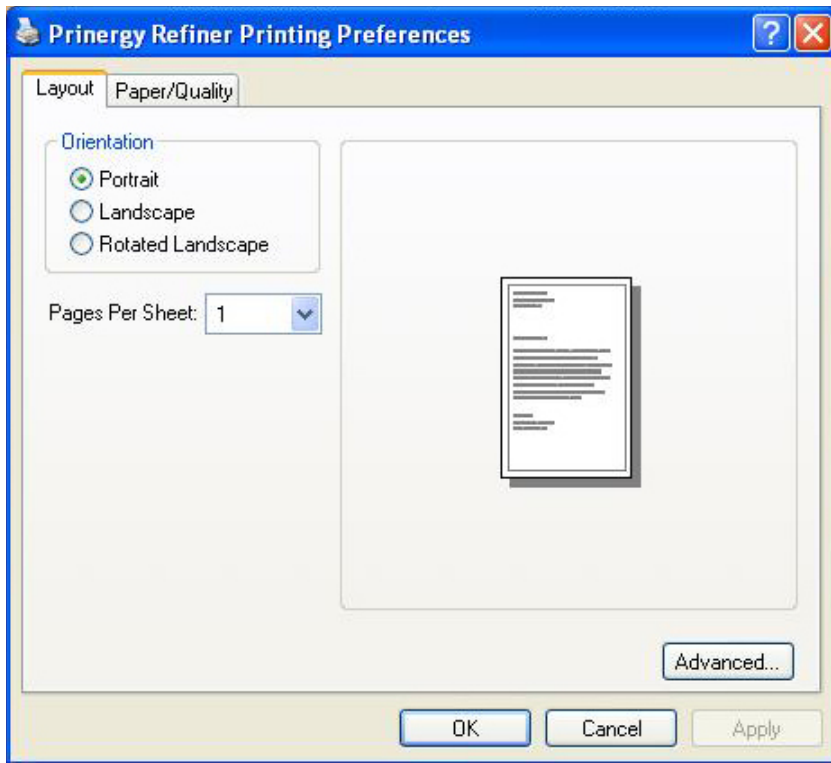
5. Click **Advanced** Tab.
 - a. Select **"Always Available"** Set **"Priority"** to 1.
 - b. Select **"AdobePS Prinerger Refiner"** from the **"Driver"** drop-down menu.
 - c. Select **Spool Print Documents So Program Finishes Printing Faster.**
 - d. Uncheck **"Start print after last page is spooled"**
 - e. Check **"Start printing immediately"**
 - f. Uncheck **"Print directly to the printer"**
 - g. Uncheck **"Hold mismatched documents, Print spooled documents first, and Keep printed documents."**
 - h. Check **"Enabled advanced printing features."**

6. Click **Color Management** Tab. Select **Automatic** for the Color Management Settings.

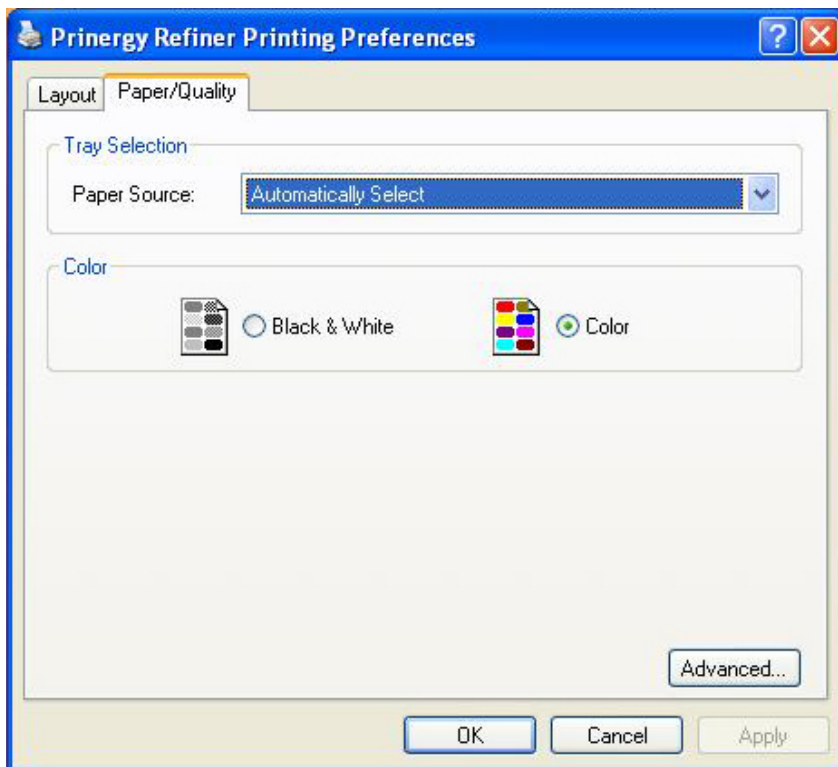


7. Click **Device Settings** Tab.
- Leave the **Font Substitution Table** at the default settings
 - Leave the **Available PostScript Memory** at the default setting.
 - Set the **Output Protocol** to **Binary**.
 - Select **No** for **Send CTRL-D Before Each Job**.
 - Select **Yes** for **Send CTRL-D After Each Job**.
 - Leave everything else in default settings.



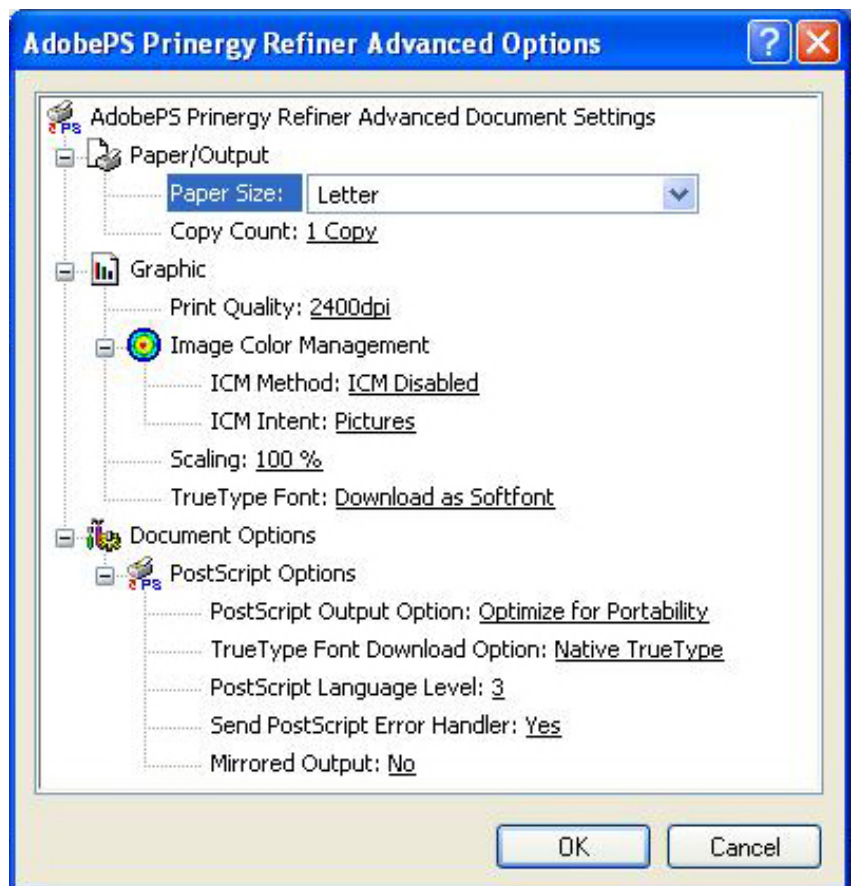


8. Click **General** Tab. Then click **Printing Preferences**.
 - a. Click **Layout** Tab and select **Portrait** even if the book designed may be landscape.
 - b. Set **Pages Per Sheet** to **1**



9. Click **Paper/Quality** Tab
 - a. **Select Color.**

10. Click **Advanced**
 - a. In **Paper/Output** section: Paper Size to **Letter** and **Copy Count** to **1 Copy**
 - b. **Graphic** Section: Set **Print Quality** to **2400 dpi**, select **ICM Disabled** for **ICM Method** and **Pictures** to **ICM Intent**.
 - c. Set **Scaling** to **100%**
 - d. **True Type Font**: drop-down menu select **Download as Softfont**.
 - e. **PostScript Output Option** drop-down menu, select **Optimize for Portability**.
 - f. Set **True Type Font Download Option** to **Native TrueType**.
 - g. Set **PostScript Language Level** to **3**.
 - h. Select **Yes** for **Send PostScript Error Handler**.
 - i. Select **No** for **Mirrored Output**
 - j. Click **OK**
11. Click **OK** again
12. Click **OK** one more time.



Prinergy Refiner Printer Driver is ready to create a PostScript file from your windows application.

If you have any questions, please call Layton Printing's Prepress Department, and we will help resolve any warnings.



Layton Printing & Mailing, Inc.
1538 Arrow Highway, La Verne, CA 91750
1-800-983-6237 • www.LaytonPrinting.com